

St. Thomas More Catholic Primary School

Northampton Road, Kettering, Northamptonshire, NN15 7JZ

T: 01536 512112

E: STMOffice@st-luke-at.co.uk

W: www.stthomasmorekettering.co.uk



General Data Protection Regulation (GDPR) privacy notice for pupils and their families

Who processes your information?

St Thomas More Catholic Primary is the data controller of the personal information you provide to us. This means the school determines the purposes for which, and the manner in which, any personal data relating to pupils and their families is to be processed.

In some cases, your data will be outsourced to a third party processor; however, this will only be done with your consent, unless the law requires the school to share your data. Where the school outsources data to a third party processor, the same data protection standards that St Thomas More Catholic Primary upholds are imposed on the processor.

The Trust Business Manager is the data protection officer for the Trust and its schools. The School Business Manager is the member of staff responsible for data protection procedures within the school. Their role is to oversee and monitor the school's data protection procedures, and to ensure they are compliant with the GDPR. The School Business Manager can be contacted on 01536 512112 or Victoria.clements@st-luke-at.co.uk.

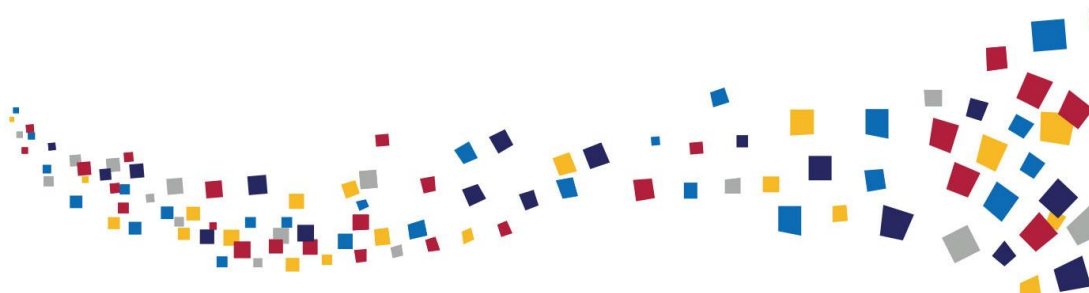
Why do we collect and use your information?

St Thomas More Catholic Primary holds the legal right to collect and use personal data relating to pupils and their families, and we may also receive information regarding them from their previous school, Local Authority (LA) and/or the Department for Education (DfE). We collect and use personal data in order to meet legal requirements set out in the GDPR and UK law, including those in relation to the following:

- Article 6 and Article 9 of the GDPR
- Education Act 1996
- Regulation 5 of The Education (Information About Individual Pupils) (England) Regulations 2013

In accordance with the above, the personal data of pupils and their families is collected and used for the following reasons:

- To support pupil learning
- To monitor and report on pupil progress
- To provide appropriate pastoral care
- To assess the quality of our service
- To comply with the law regarding data sharing



St. Thomas More Catholic Primary School

Northampton Road, Kettering, Northamptonshire, NN15 7JZ

T: 01536 512112

E: STMOffice@st-luke-at.co.uk

W: www.stthomasmorekettering.co.uk



Which data is collected?

The categories of pupil information that the school collects, holds and shares include the following:

- Personal information – e.g. names, pupil numbers and addresses
- Characteristics – e.g. ethnicity, language, nationality, country of birth and free school meal eligibility
- Attendance information – e.g. number of absences and absence reasons
- Assessment information – e.g. national curriculum assessment results
- Relevant medical information
- Information relating to Special Educational Needs and Disabilities (SEND)
- Behavioural information – e.g. number of temporary exclusions

Whilst the majority of the personal data you provide to the school is mandatory, some is provided on a voluntary basis. When collecting data, the school will inform you whether you are required to provide this data or if your consent is needed. Where consent is required, the school will provide you with specific and explicit information with regards to the reasons the data is being collected and how the data will be used.

How long is your data stored for?

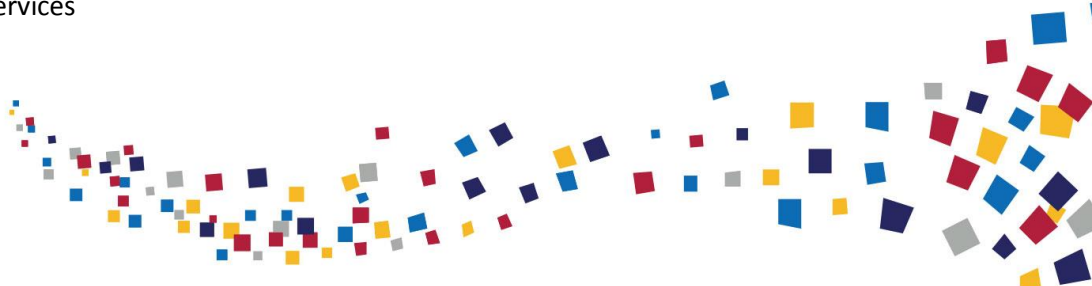
Personal data relating to pupils at St Thomas More Catholic Primary and their families is stored in line with the school's GDPR Data Protection Policy.

In accordance with the GDPR, the school does not store personal data indefinitely; data is only stored for as long as is necessary to complete the task for which it was originally collected.

Will my information be shared?

St Thomas More Catholic Primary will not share your personal information with any third parties without your consent, unless the law allows us to do so. The school routinely shares pupils' information with:

- Pupils' destinations upon leaving the school
- The Local Authority
- The Department for Education
- Different departments of the NHS
- Educational Psychologist
- Speech and Language Therapy Services
- Children and Families Services
- Children and Mental Health Services
- Behaviour Support Services



St. Thomas More Catholic Primary School

Northampton Road, Kettering, Northamptonshire, NN15 7JZ

T: 01536 512112

E: STMOffice@st-luke-at.co.uk

W: www.stthomasmorekettering.co.uk



- Bereavement Services
- Specific Specialist Support Services
- Counselling Services
- Sensory Impairment Services
- Music Services
- Multi Agency Safeguarding Team
- Parentmail
- School Information Technology Services

A current list of third parties the school shares information with can be found on the school website – <http://www.stthomasmorekettering.co.uk/>

The school is required to share pupils' data with the DfE on a statutory basis. This includes the following:
Personal information – e.g. names, pupil numbers and addresses

- Characteristics – e.g. ethnicity, language, nationality, country of birth and free school meal eligibility
- Attendance information – e.g. number of absences and absence reasons
- Assessment information – e.g. national curriculum assessment results
- Information relating to Special Educational Needs and Disabilities (SEND)
- Behavioural information – e.g. number of temporary exclusions

The National Pupil Database (NPD) is managed by the DfE and contains information about pupils in schools in England. St Thomas More Catholic Primary is required by law to provide information about our pupils to the DfE as part of statutory data collections, such as the school census; some of this information is then stored in the NPD. The DfE may share information about our pupils from the NDP with third parties who promote the education or wellbeing of children in England by:

Conducting research or analysis.

- Producing statistics.
- Providing information, advice or guidance.

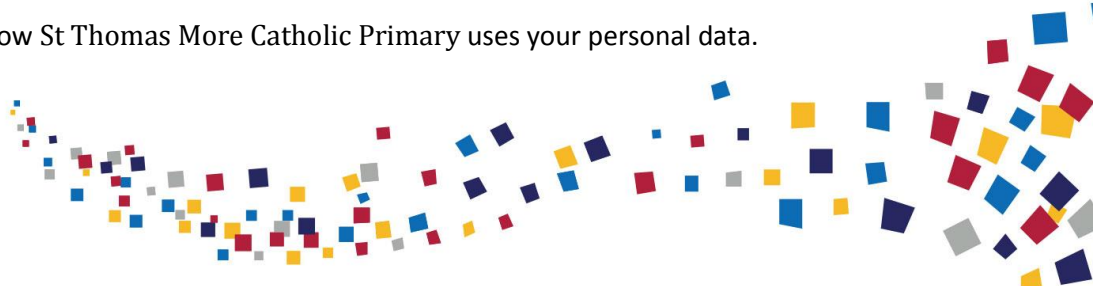
The DfE has robust processes in place to ensure the confidentiality of any data shared from the NDP is maintained.

What are your rights?

Parents and pupils have the following rights in relation to the processing of their personal data.

You have the right to:

- Be informed about how St Thomas More Catholic Primary uses your personal data.



St. Thomas More Catholic Primary School

Northampton Road, Kettering, Northamptonshire, NN15 7JZ

T: 01536 512112

E: STMOffice@st-luke-at.co.uk

W: www.stthomasmorekettering.co.uk



- Request access to the personal data that St Thomas More Catholic Primary holds.
- Request that your personal data is amended if it is inaccurate or incomplete.
- Request that your personal data is erased where there is no compelling reason for its continued processing.
- Request that the processing of your data is restricted.
- Object to your personal data being processed.

Where the processing of your data is based on your consent, you have the right to withdraw this consent at any time.

If you have a concern about the way St Thomas More Catholic Primary and/or the DfE is collecting or using your personal data, you can raise a concern with the Information Commissioner's Office (ICO). The ICO can be contacted on 0303 123 1113, Monday-Friday 9am-5pm.

Where can you find out more information?

If you would like to find out more information about how we and/or the DfE collect, use and store your personal data, please visit our website <http://www.stthomasmorekettering.co.uk/> or download our GDPR Data Protection Policy.

Declaration

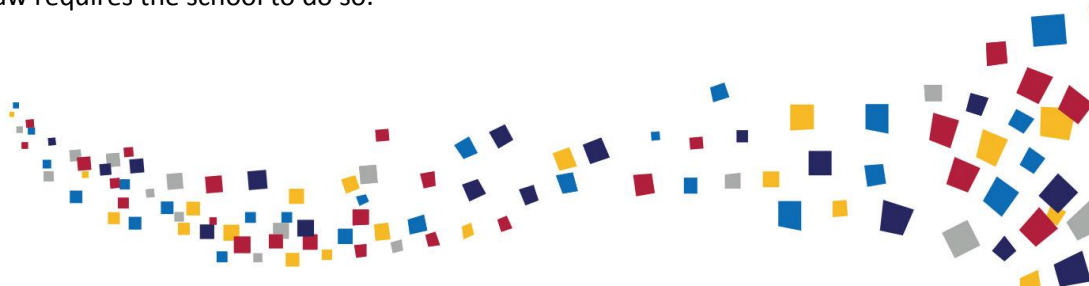
Name of parent / Carer: _____

(on behalf of my child/children)

Name(s) of child / children: _____

I, declare that I understand:

- St Thomas More Catholic Primary has a legal and legitimate interest to collect and process my personal data in order to meet statutory requirements.
- How my data is used.
- St Thomas More Catholic Primary may share my data with the DfE, and subsequently the LA.
- St Thomas More Catholic Primary will not share my data to any other third parties without my consent, unless the law requires the school to do so.



St. Thomas More Catholic Primary School

Northampton Road, Kettering, Northamptonshire, NN15 7JZ

T: 01536 512112

E: STMOffice@st-luke-at.co.uk

W: www.stthomasmorekettering.co.uk



- St Thomas More Catholic Primary will always ask for explicit consent where this is required, and I must provide this consent if I agree to the data being processed.
- My data is retained in line with the school's GDPR Data Protection Policy.
- My rights to the processing of my personal data.
- Where I can find out more information about the processing of my personal data.

Name: _____

Signature: _____

Date: _____

